

SENITEC

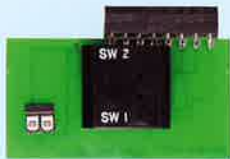


VALVE POSITION INDICATING DEVICES

SENITEC

Valve Position Indicating Devices

*Efficient, Reliable Indication Solutions
for Today's Most Challenging Applications*



Senitec's ongoing advancements in valve position indicating technology and process controls deliver the most efficient and reliable indication solutions for today's most challenging applications.

Enclosures to include Nema 3, 4, 4x, 7 and 9 are available for your most demanding applications. Manufactured to the highest standards for performance in a wide variety of working environments, the Senitec line of Valve Position Indicating Devices offers you both reliable performance and maximum flexibility.

All switch configurations, mechanical, inductive, SPDT, DPDT hermetically sealed proximity sensors, solenoids valves and actuator sensor interface "ASi" are available. Mechanical Switches 10 amp SPDT as standard, all switch options are enclosed on a PCB board with no exposed wiring. Senitec also offers, 10m amp and gold plated SPDT switches for low power and intrinsically safe applications.

Make the switch to Senitec Valve Position Indicating Devices...no other limit switch has this much experience with valve indication.

Setting System

Easy "Set and Forget" Cam Design

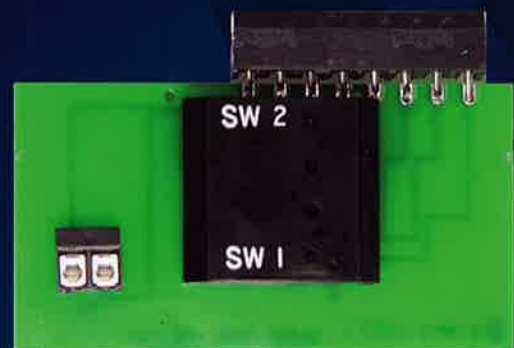
This cam setting system uses no mechanical devices (springs or screws) for adjustment. Senitec utilizes a unique internal leaf spring design, which precisely positions and locks on to a splined shaft, which prevents calibration and life cycle inaccuracies. When needed, the cam system is easily adjusted using no tools.



PrE2 Proximity Sensor

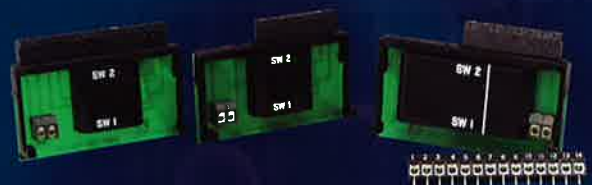
Providing Innovative Safety Protection and critical Reliability

When accuracy, performance and reliability are critical, the Senitec PrE2 proximity sensor provides the answer. Encased in a Sentar housing and hermetically sealed with epoxy Ackralite, the PrE2 proximity sensor provides the industry's foremost protection from moisture, shock, and corrosive environments as well as electronic spikes that damage and shorten the life cycle capacity of traditional VPIDs.



Easy Wire Termination

Configured with no exposed wiring, our position indicating devices offer easy wire termination coupled with the necessary space for the most difficult installation. Options include stationary or plug in terminal strip 8 or 14 points.



SENITEC

NEMA 3, 4, 4x Valve Position Indicating Device

A Proven Performer

Senitec's NEMA 3, 4, 4x valve position indicating devices offer FDA approved co-polyester alloy NEMA 4 housings for use in the most demanding environments. Made from Sentar Co-Polyester alloy along with stainless steel trim, these valve position indicating devices allow for years of maintenance-free service.

The extraordinary toughness, superior chemical resistance and excellent impact strength creates a new generation of VPIDs. Senitec's VPIDs are also available in stainless steel and aluminum housings for use in demanding operating environments.



NEMA 7 Valve Position Indicating Device

The NEMA 7 enclosure is made from heavy-duty aluminum with a powder-coated epoxy paint finish to withstand the challenges of your hazardous environment applications. Included are options for mechanical, proximity switches, "ASi" networking and a variety of mounting brackets and mounting configurations.



NEMA 3, 4, 4x Part Numbering Chart

ENCLOSURE TYPE

A=SENTAR (SS Inserts)
B=ALUMINUM
C=STAINLESS STEEL





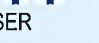

CONDUITS

A=STD 2 1/2" FEMALE
B=3 1/2" FEMALE
C=2 1/2" FEMALE, 1 1/2" MALE

BEARINGS

E=STD EASTAR
B= BRONZE
S=STAINLESS STEEL

INDICATOR

A=STD 90 DEG BLACK/YELLOW
B=90 DEG BLUE/WHITE
C=90 DEG RED/WHITE
D=90 DEG GREEN/WHITE
E=90 DEG RED/GREEN
F=90 DEG 3 WAY 
G=90 DEG 3 WAY 
H=90 DEG 3 WAY 
I=180 DEG 3 WAY 
J=180 DEG 3 WAY 
K=90 DEG 4 WAY 
L=DEFINED BY USER
N=NONE

SWITCH TYPE

A=STD 10 AMP MECHANICAL
B=100 m A GOLD MECHANICAL
C=3 AMP PROXIMITY
D=1 AMP PROXIMITY
E=2 AMP DPDT MECHANICAL
F=INDUCTIVE
G=AS-i

NUMBER OF SWITCHES

2=2
3=3
4=4
0=NONE

SHAFT

1=303 SS NAMUR
2=316 SS NAMUR
3=303 SS 1/4 DD
4=316 SS 1/4 DD

TERMINAL STRIP

1=8 POLE FIXED
2=8 POLE PLUG IN
3=14 POLE FIXED
4=14 POLE PLUG IN

MOUNTING

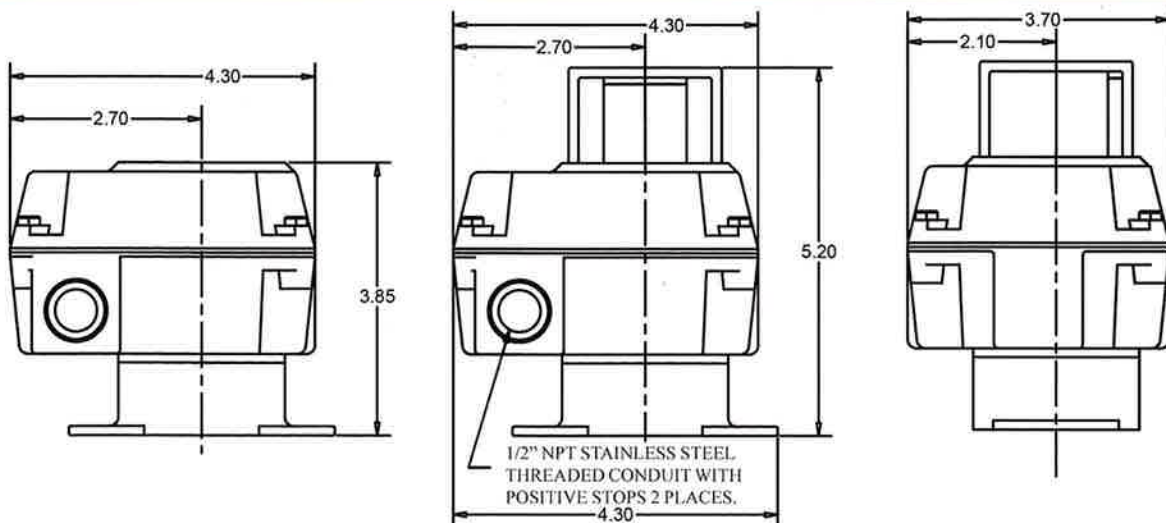
1=80MM X 20MM NAMUR
2=80MM X 30MM NAMUR
3=130MM X 30MM NAMUR
4=130MM X 20MM NAMUR
5=2.25 SQ W (4) 5/16 - 18
6=80MM X 10MM NAMUR

SOLENOID

0=NONE
1=3 WAY 24VDC 0.2 AMP
2=4 WAY 24VDC 0.2 AMP







ENCLOSURE TYPE CONDUITS BEARINGS INDICATOR SWITCH TYPE
A A E A A 2 1 1 1 0

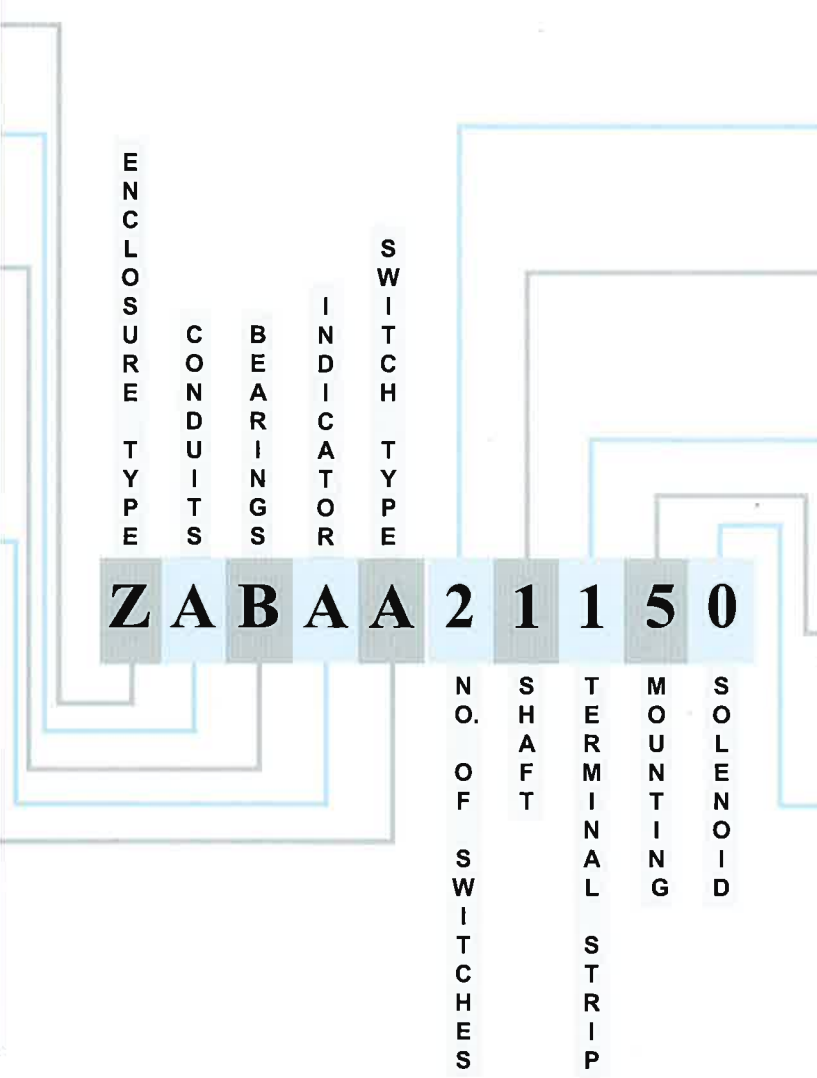
NO. OF SWITCHES SHAFT TERMINAL STRIP MOUNTING SOLENOID



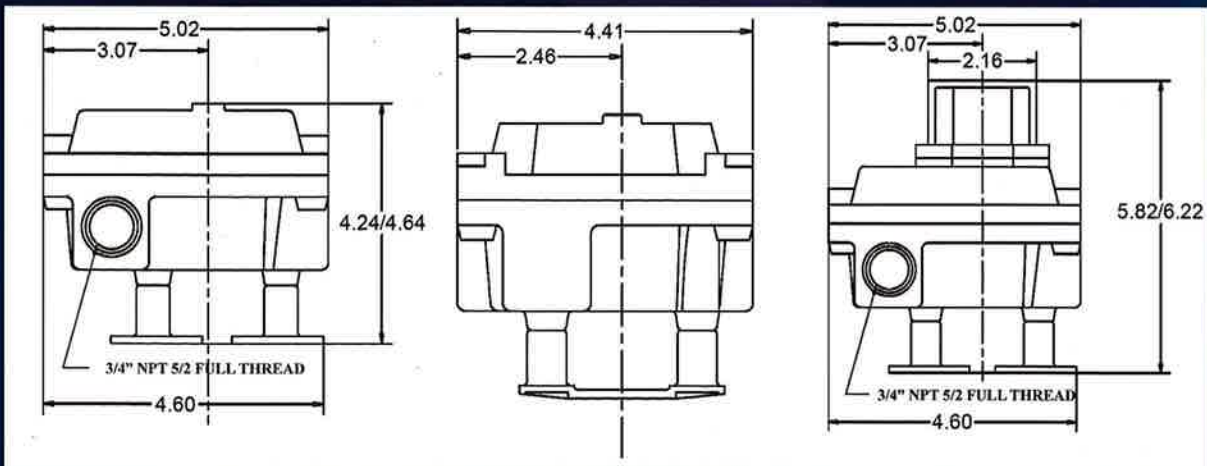
NEMA 7

Part Numbering Chart

ENCLOSURE TYPE Z=ALUMINUM
CONDUITS A=STD 2 3/4" FEMALE B=3 3/4" FEMALE C=2 3/4" FEMALE, 1 1/2" MALE
BEARINGS B= STD BRONZE S=STAINLESS STEEL
INDICATOR A=STD 90 DEG BLACK/YELLOW B=90 DEG BLUE/WHITE C=90 DEG RED/WHITE D=90 DEG GREEN/WHITE E=90 DEG RED/GREEN F=90 DEG 3 WAY  G=90 DEG 3 WAY  H=90 DEG 3 WAY  I=180 DEG 3 WAY  J=180 DEG 3 WAY  K=90 DEG 4 WAY  L=DEFINED BY USER N=NONE
SWITCH TYPE A=STD 10 AMP MECHANICAL B=100 mA GOLD MECHANICAL C=3 AMP PROXIMITY D=1 AMP PROXIMITY E=2 AMP DPDT MECHANICAL F=INDUCTIVE G=AS-i I=INTRINSICALLY SAFE



NUMBER OF SWITCHES 2=2 3=3 4=4 0=NONE
SHAFT 1=303 SS NAMUR 2=316 SS NAMUR 3=303 SS 1/4 DD 4=316 SS 1/4 DD
TERMINAL STRIP 1=8 POLE FIXED 2=8 POLE PLUG IN 3=14 POLE FIXED 4=14 POLE PLUG IN
MOUNTING 1=80MM X 20MM NAMUR 2=80MM X 30MM NAMUR 3=130MM X 30MM NAMUR 4=130MM X 20MM NAMUR 5=2.25 SQ W (4) 5/16 - 18
SOLENOID 0=NONE 1=3 WAY 24VDC 0.2 AMP 2=4 WAY 24VDC 0.2 AMP



SHADOW

Inductive Sensors

Senitec's *Shadow Switch* is a solid-state sensor constructed of an engineered resin that is suitable for outdoor and indoor applications. The *Shadow* mounts directly to VDI/VDE 3845 actuators for a very low profile. There are no moving parts to ensure trouble free service.

Rated for Nema 4, 4X and can be used in intrinsically safe areas with proper barriers and cabling. Also available with "ASI" Network Module.



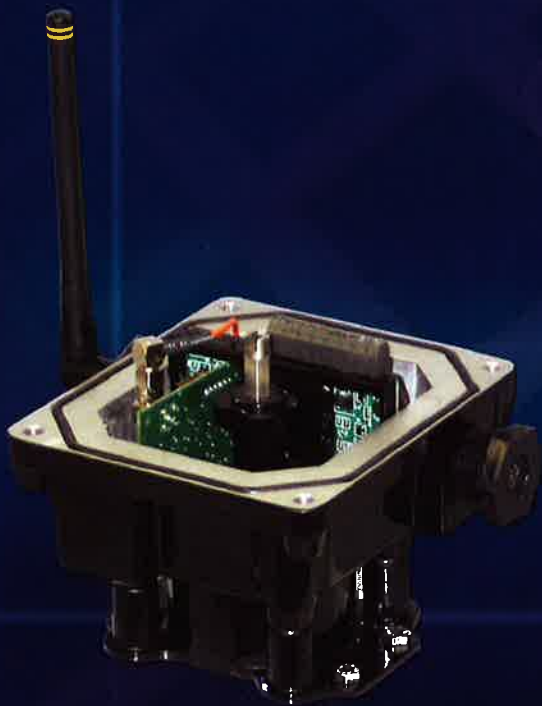
SHADOW

Part Numbering Chart

SENSOR MODEL IS55=LoPROFILE INDUCTIVE IS56=MiniSHADOW INDUCTIVE	SENSOR MODEL IS55
SWITCH TYPE ASI=AS-i - 18-33 VDC 80ma ACDC=400ma AC / 300ma DC DC=10-65 VDC 200ma DNET=DEVICENET DCMS=MiniSHADOW 10-30 DC	SWITCH TYPE ASI
RECEPTACLE 1=MINI 5-PIN MALE AC 2=MICRO AS-i M/F (IN/OUT) 3=MICRO 4-PIN MALE DC 4=MICRO DeviceNet	RECEPTACLE 2
MOUNTING 1=80 X 30 X 20mm NAMUR 2=80 X 30 X 30mm NAMUR 3=130 X 30 X 30mm NAMUR 4=130 X 30 X 50mm NAMUR	MOUNTING 1
SOLENOID 1=3 WAY 24 VDC 200ma 2=4 WAY 24 VDC 200ma 3=24 VDC LOW POWER - 80ma 4=NONE	SOLENOID 0
WIRING CORDSETS 1=ACDC CORDSET "TEE" 2=DC CORDSET "TEE" 3=ACDC MINI 5-PIN CORDSET 4=DC MICRO -PIN CORDSET 5=AS-i MICRO CORDSET 6=DeviceNet MICRO CORDSET 7=AC/DC SOLENOID CORDSET 8=AS-i SOLENOID CORDSET 0=NONE	WIRING CORDSETS 5

The New *SENITEC* Wireless Valve Condition Monitor

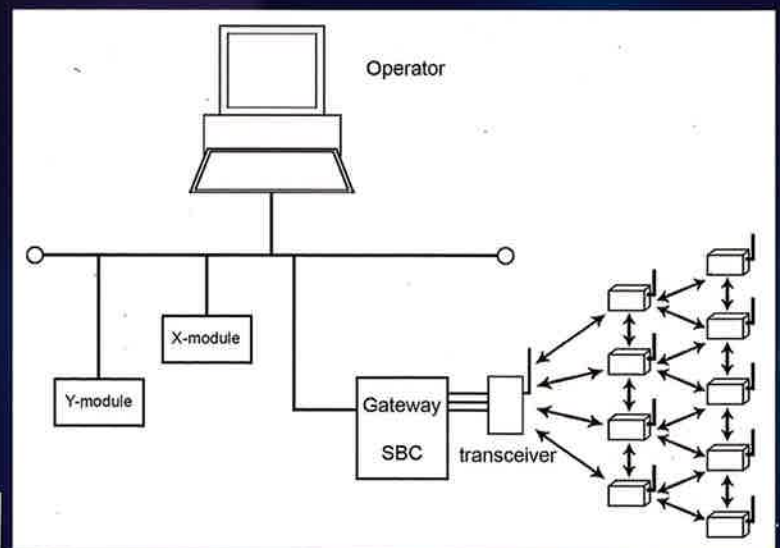
Senitec has created a wireless Valve Condition Monitoring device (VCM) utilizing a 900 MHz Mesh network. This device helps with intelligent real time maintenance and monitoring of your quarter turn and linear valve applications.



- *The VCM will indicate a valve position.*
- *The VCM will keep track of the number of cycles a valve has changed position.*
- *The VCM will measure the time it takes a valve to open or close, indicating a potential actuator or valve failure.*
- *The VCM also has temperature measuring capabilities, which can indicate valve packing leakage/failure.*

The user can determine the data configuration of the units. The units can send information to the host every time an operator queries them, an event occurs, or only when a threshold alarm has happened. The software can create a log of any data the host has received, thus making data more useful.

For additional information regarding our products, please phone our office or visit us on the web at: www.senitec.com



Integration to existing bus networks

SENITEC

2150 Boggs Rd., Ste 410 Duluth, GA 30096
P.O. Box 956729 Duluth, GA 30095
770-416-1202 sales@senitec.com